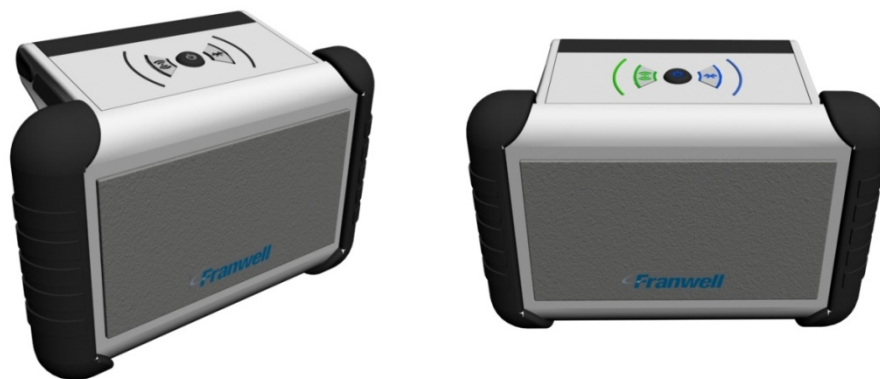
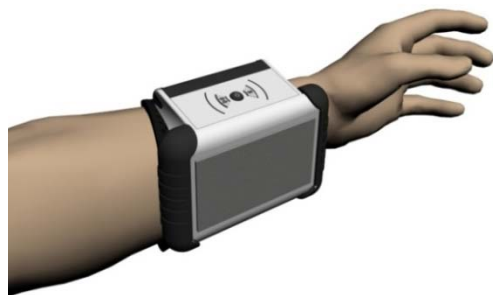


## rfid> Sleeve WR100, a Wearable RFID System



The rfid> Sleeve WR100 is a compact wearable RFID system that consists of a reader and an antenna enabled by Bluetooth and a shielded arm band. Designed to be worn on the lower arm as a hands-free solution, the sleeve allows the person handling product to work at their most natural and efficient state while capturing the information needed in a seamless and passive manner.

The Sleeve's lightweight and ergonomic design enables the user to work more efficiently and comfortably by offering a hands free operation while providing more accurate results at differentiating individual products. Its wireless communication with the host system also provides a more versatile data processing solution for various business needs. Also important, the rfid> Sleeve aims to protect the user from excessive RF radiation with its RF shielding materials integrated inside its breathable, flexible and comfortable forearm mount accessory



<b>Specifications</b>	
Dimensions (H x W x L)	68 x 100 x 44 mm (2.68 x 3.94 x 1.78 in)
Power:	Removable/rechargeable lithium-ion battery
Storage Temperature:	-30°C to 85°C (-22°F to 185°F)
Operating Temperature:	-20°C to 70°C (-4°F to 158°F)
Communication interface:	Bluetooth v2.0+EDR support
Supported RFID protocols:	Class1 Gen2 / ISO 18000-6C, EPC Class1 Gen1, ISO 18000-6B, IP-X
RFID Frequencies:	862-955 MHz (Worldwide coverage)
RF Output power:	Up to 27dBm
Typical RFID read range:	50cm at 22dBm output power with linear polarized 0dBi gain antenna (read range depends on the type of tag used)
Accessories:	RF Shielded Arm Band External Battery Charger Barcode ring scanner